

**OFFICE HOURS:**

Office Open 08h00 till 20h00 –  
please arrange if you will arrive after.

Weekdays the Office is closed between  
13h00 – 14h00.

Saturday & Sunday the office is closed  
from 13h00 – 16h00.



info@elandskloof.co.za

www.elandskloof.co.za

Office: 01325 40136

(07h30—20h00)

Cellphone: 082 922 6835

(07h00—21h00)

**ACCOMMODATION UNITS****INCLUDES THE FOLLOWING:**

- \* Linen (**NO TOWELS**)
  - \* Crockery & Cutlery
  - \* Kitchen Utensils (see a complete inventory list in each unit, available on our webpage)
- Units are serviced daily except on some Public Holidays, Sundays and Departure days

(Our staff will only wash your dishes after all their units have been serviced  
please ask them if you like them to come back)

**WE DO NOT SUPPLY DISH CLOTHS or TOWELS!**

**We do not supply any Tea/Coffee/Milk/Sugar in the units**

**UNIT CHECK IN & CHECK OUT TIMES: z**

- \* Check in time: After 14H00 (peak seasons after 15h00) and  
Before 20H00(peak season before 21h00)  
NO check ins will be done after 21H00 without 100% pre-payment +  
breakage deposit  
SATURDAY & SUNDAY check-ins after 16h00 (please arrange time with us)
- \* Check out time: 10h00 late departures must be arranged on arrival –  
if possible  
(no key deposits will be returned after 12h30on departure day)  
Late Departures - linen might be removed at 10h00 on departure day.

*We do allow dogs at an extra charge in certain units of the lodge. Please  
check before you bring your animals along.*

**CAMPING FACILITIES**

**CHECK in from after 10h00**

**CHECK out as late as 17h00**

**INCLUDES THE FOLLOWING:**

- Various Bathrooms with hot & cold water
- Washup areas
- Fresh water taps in camping area
- Electricity points – please bring a long extension on long weekends, limited connection points
- All grass areas, with and without shade
- Thatch roof areas at an extra cost (small @ R 100 pd, large @ R 200 pd)  
No dedicated electric points.

Braai drums available – we don't have enough for everyone on a  
busy weekends, please bring your own with if you can

**EXCLUDES THE FOLLOWING:**

- Kitchen area for cooking
- Private Bathrooms  
(Private Bathrooms Available only out of season when possible @ an extra cost)

Camping is charged @ R 100 per person per night,  
Children under 2 – free.Check In after 10h00 / Check Out by 16h00  
Full payment must be made on arrival – no exception!

*We do allow dogs at a charge of R 30 per dog per day*

DAY VISITORS: No visitors allowed without prior arrangement.  
Wood, Charcoal, Firelighters and Ice available from the staff at the lodge  
Television for SPORT EVENTS available at the Lapa area – on request only (reasonable hours)  
**DOGS ARE NOT allowed to chase the free roaming farm animals**

**FOR YOUR INFORMATION, RULES & REGULATIONS:**

- UNITS:** NO mattresses, linen or furniture is to be removed, moved or taken outside. IF you move furniture, please move it back. No more than the allocated maximum amount of people per unit allowed. Including Children above 2.  
Additional tables and chairs available if you require any, please ask the staff. Gas heaters can be hired from reception/staff.  
NO DOGS ALLOWED on any furniture, you will be charged for cleaning! Certain units are not allowed dogs.
- CAMPING:** Camping only in allocated areas. Not allowed to camp between the houses.  
Camping guests to use camping bathrooms at all times.  
Thatch Roofs are to be paid for at Reception. ASAP.
- ELECTRICITY:** Unfortunately, our electricity is not strong enough to carry certain electrical appliances. We ask you, please do not switch on all appliances at the same time, appliances like ie: kettles, stoves, toasters, etc; consumes a lot of electricity and will cause power failures.  
**(NO electric heaters allowed, we do have GAS HEATERS available @ a cost).**
- CLEANING STAFF:** Your outside bin will be cleaned daily. Unit attendants will clean your unit between 9am – 2pm, they are to clean the bathrooms, wash the floors and make the beds. They will not wash any dishes; they are only allowed to help with the dishes after all their units have been serviced and cleaned. No cleaning will be done on Sundays or on the day of your departure.  
**We kindly request you; please do not give any staff member alcoholic drinks. You are welcome to leave it with management to issue to them on their off days.**
- ACTIVITIES:** **FLYFISHING** - Strictly Flyfishing, NO bass rods, bait, spinners, lures etc. are allowed. Only approved fly fishing equipment is to be used. No boats are allowed, only waders. **No fish above 1.5 kg or Brown Trout to be taken out – strictly catch and release.** Although we promote catch and release, a bag limit of 2 trout per angler is allowed. Anglers must have a valid ELANDSKLOOF permit in their possession at all times - R 150 per person per day, bag limit of 2. No rods to rent at Elandskloof.  
Rent a rod in Dullstroom at : LIFE ON FLY 082 783 3091  
MAVUNGANA 013 254 0270  
STERLING FLYMEN 083 630 8784  
VILLAGE ANGLER 013 254 0156  
**HIKING & MOUNTAIN BIKING** - please ask staff to explain where all the best routes are. I.e.; waterfall, game reserve. See blackboard at lapa for guided tours.  
**HORSE RIDING** @ The Outpost Dullstroom, across the road from Elandskloof.
- FACILITIES:** Indoor Heated Swimming pool & Jacuzzi.  
NATURAL FOUNTAIN WATER, very little chemicals are used in the pool. The water is as clean as the dam water.  
Please adhere to the rules on the doors. Only heated over weekends and peak seasons.  
Restaurant – open on certain dates, please inquire.
- MUSIC:** NO loud music or noise is allowed, if you do play music, please play it to yourself and not the whole resort. Please respect the other guests regarding noise. Noise do travel further in open spaces. All music must be TURNED OFF at 22H00
- FIRES & FIREWORKS:** Please do NOT make any fires in the field. Don't make any fire you cannot control; the grass is dry and lots of potential for runaway fires.  
**NO Fireworks are allowed!!** No fire boxes directly on the grass, as the grass will burn into the roots. No fires outside the demarcated camping area. NO fires close to any thatch roofs.
- PETS:** Please see our website for prices and rules. If you do bring a pet, please do not park close to the reception, our dogs are not too friendly with strange dogs.
- ENTRANCE GATES:** We have pin controlled gates at all entrances to the farm. Please ensure you get the code to enter/exit the farm.  
Gate 1 is the reception entrance and Gate 2 is on the Elandskloof road. NO CHECK IN AFTER 21h00 without prior arrangement.

# Elandskloof Trout Farm

## OUR STORY :

Elandskloof is the oldest trout farm in Mpumalanga. It started around 1960 when Dolf Combrink took an interest in fly fishing and breeding of trout.

The resort was only a small part of the farms operation those days but is a much bigger operation today. Today Elandskloof is still run by The Combrink Family

Mpumalanga Trout Country



## Directions :

- Turn off at the Belfast off-ramp R540/R33 towards Dullstroom & Mashishing
- At the 6th Stop street (VIVA), turn right towards Dullstroom
- Continue for 25km and turn right onto the Machadodorp gravel road
- Continue for 5.1km, turn left at the first entrance to ELANDSKLOOF TROUT FARM



## Shops In Town

- Lebamba Supermarket
- Saverite
- Hobbies of Antiquity
- Lily laundry and cleaning  
072 318 7403
- Scroll through town as there are loads of shops to explore



## Pharmacy

- Dullstroom Pharmacy (opposite Puma garage)  
0132540407



## Restaurants in Town

- Mayfly  
084 619 4946
- Mrs Simpsons  
013 254 0088
- The Coachman  
013 254 0019
- The Dullstroom Inn  
013 254 0071
- Waffle & Co  
069 235 3141
- Seattle Coffee  
013 254 0009
- Duck & Trout  
067 290 3822
- Katinkas  
072 317 2380
- Amigos Cantina  
066 565 5044
- Critchley Hackle Lodge  
013 136 0200
- Harrie's Pancakes  
013 254 0801
- The Banker's  
013 136 0103



## Flyfishing training

- Life on fly 082 783 3091
- Mavungana 013 254 0270
- Sterling Flymen 083 630 8784
- Village angler 013 254 0156



## Activities on the farm

- Fly fishing
- Hiking trails
- Game viewing
- Bird watching
- Game drives
- Heated pool and jacuzzi



## Activities nearby

- Horseback riding @The Outpost  
Dullstroom 082 876 5629
- Bird of Prey Dullstroom  
082 899 4108
- Clay pigeon shooting @ Lake Heron  
082 781 0242



## For the adults

- Anvil Ale House and Brewery
- Wild about Whiskey
- Dullstroom Cultour Co. Wine club
- Dullstroom Gin



## Spas

- The Highlander Hotel  
013 254 0039
- The Highland Rose  
071 388 6466
- Vygenhoet Spa  
011 021 6690



## Shuttle Service

- Michelle  
072 588 5285



## Physiotherapy

- Gudrun Combrink  
082 550 1903



## Reflexology

- Ronel Van Noordwyk  
082 783 5978



Elandskloof Trout Farm

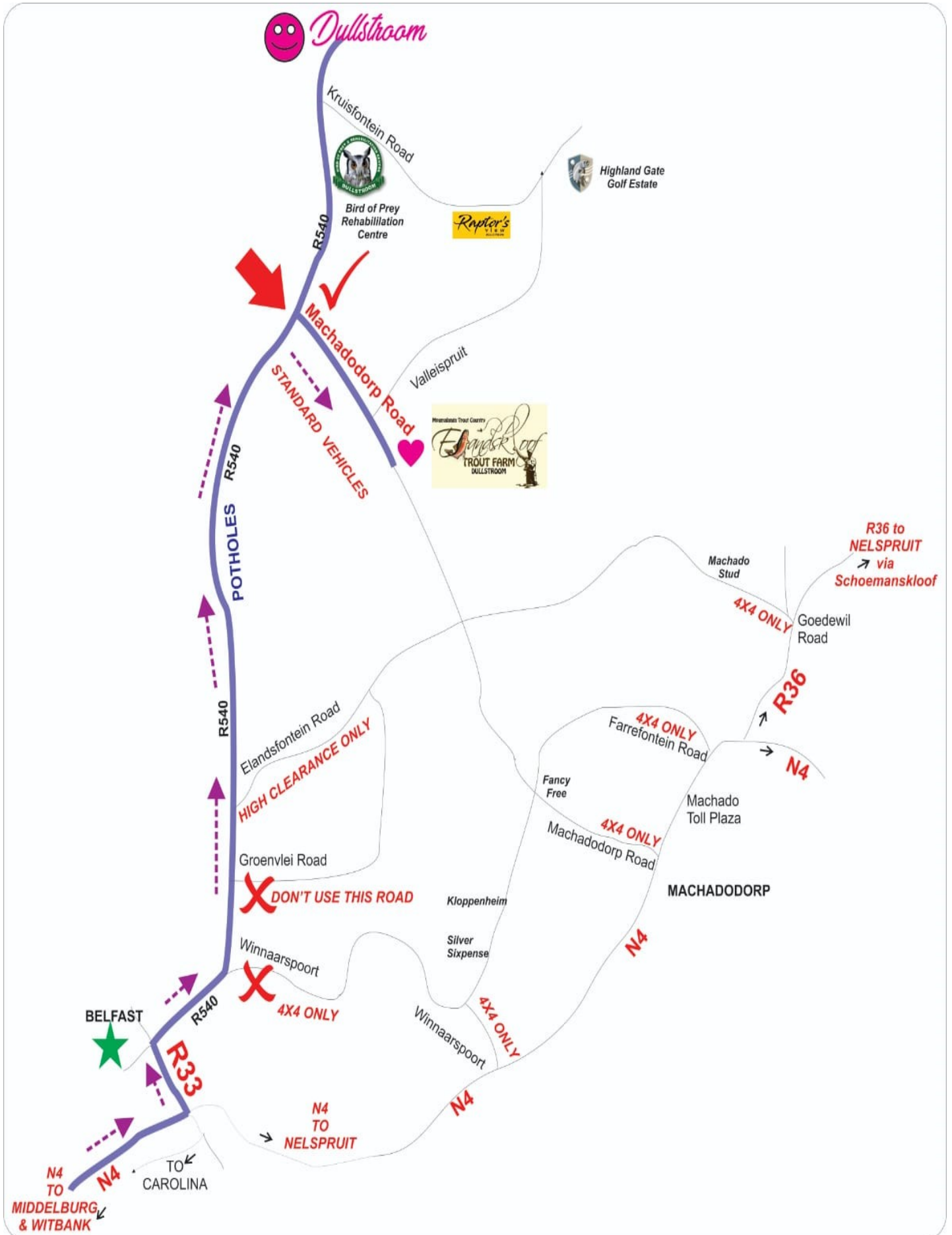


0132540136/0829226835



[www.elandskloof.co.za](http://www.elandskloof.co.za)

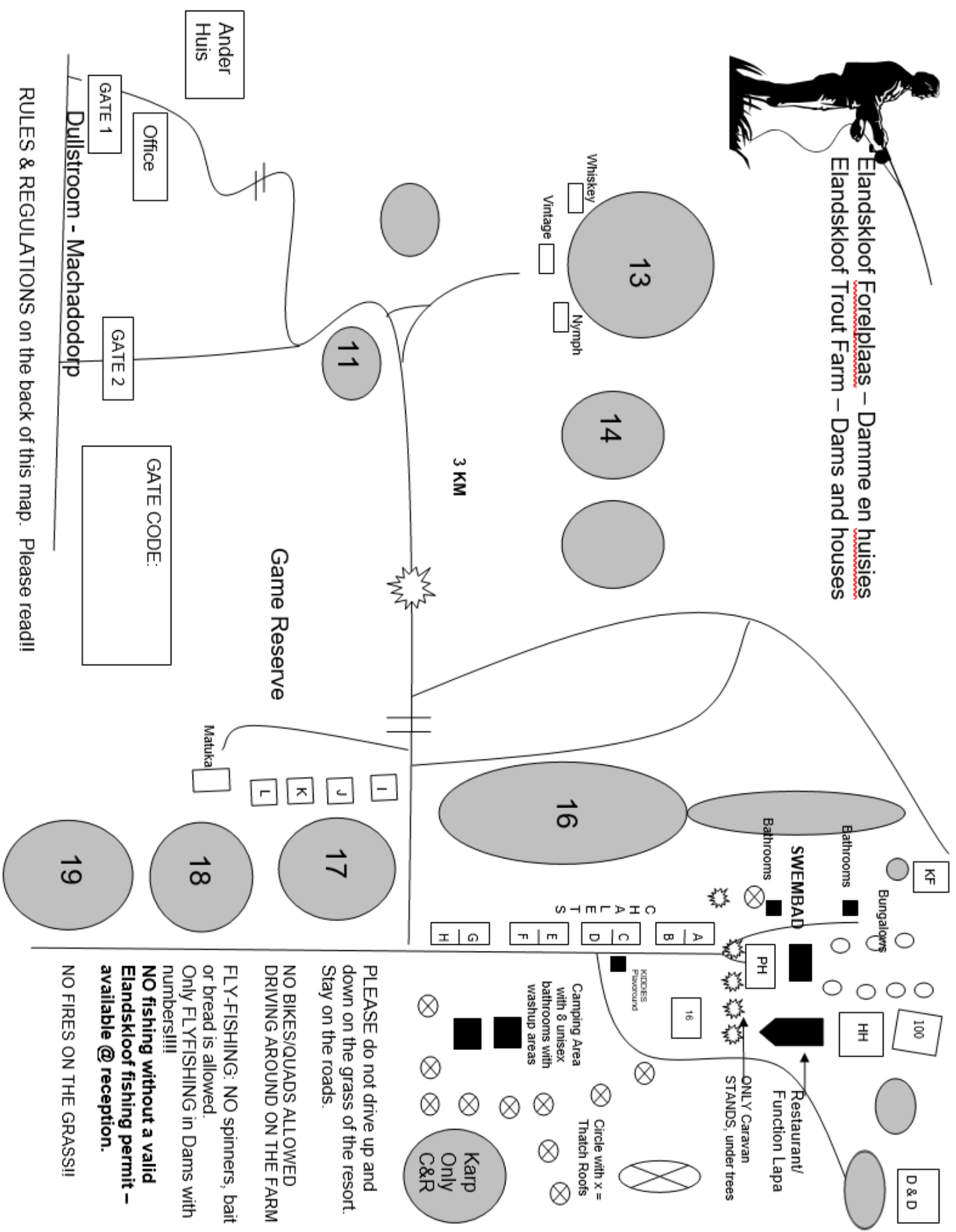
# DIRECTIONS TO ELANDSKLOOF





# Elandskloof Forelplaas – Damme en huisies

## Elandskloof Trout Farm – Dams and houses



RULES & REGULATIONS on the back of this map. Please read!!

PLEASE do not drive up and down on the grass of the resort. Stay on the roads.

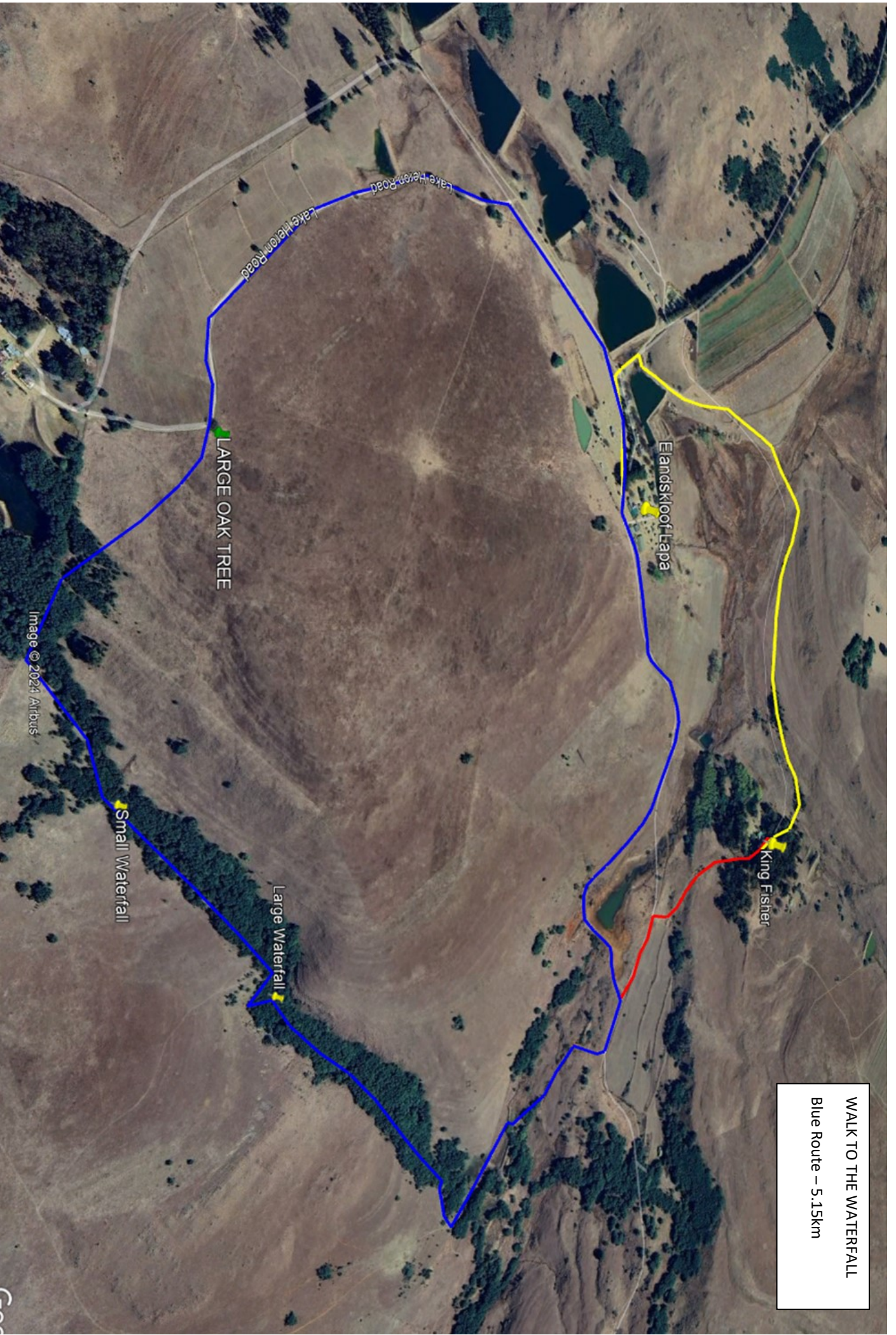
NO BIKES/QUADS ALLOWED DRIVING AROUND ON THE FARM

FLY-FISHING: NO spinners, bait or bread is allowed. Only FLY-FISHING in Dams with numbers!!!!

NO fishing without a valid Elandskloof fishing permit – available @ reception.

NO FIRES ON THE GRASS!!





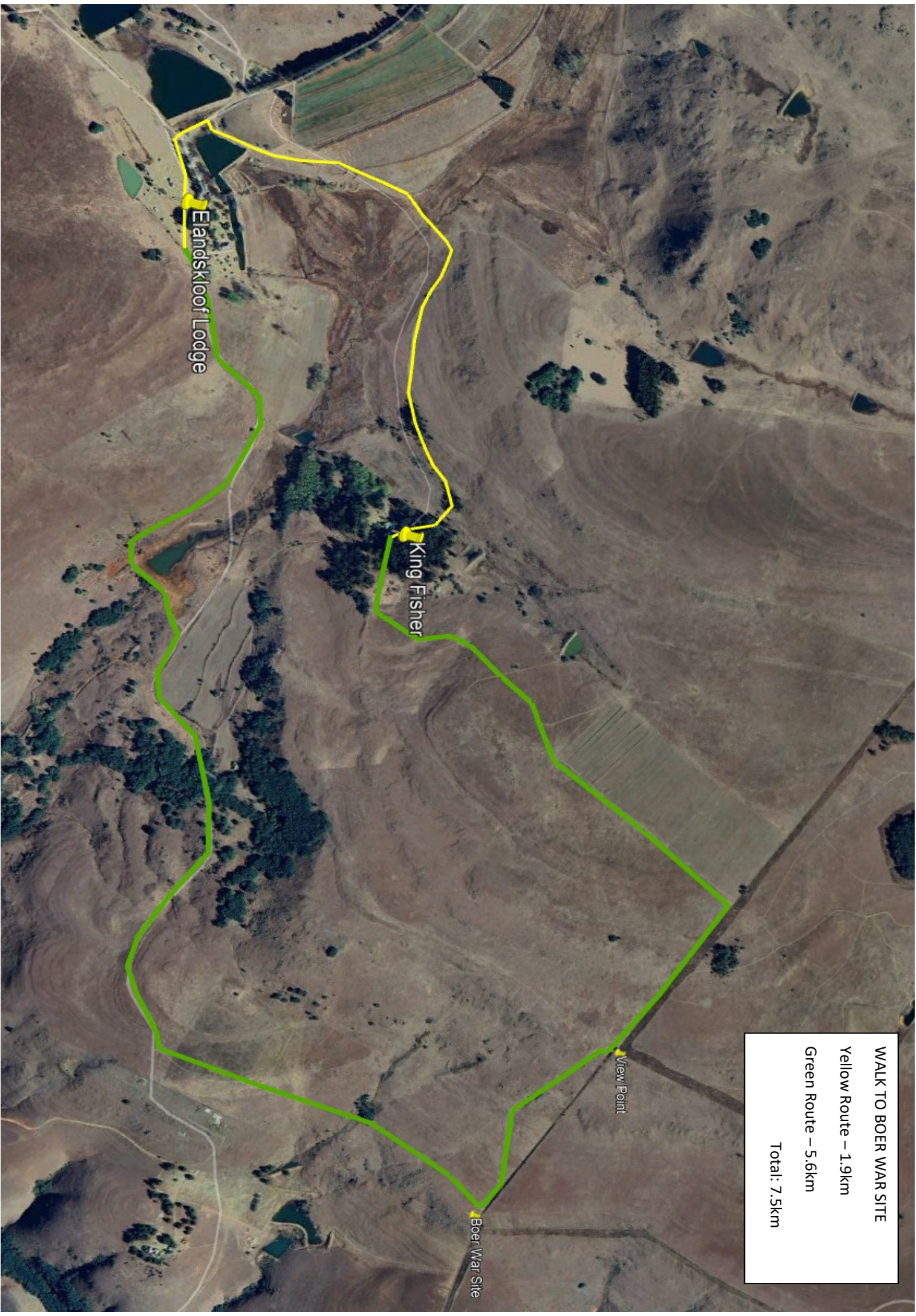
WALK TO THE WATERFALL  
Blue Route – 5.15km





WALK to GAME RESERVE  
Pink Route – 5.1km





WALK TO BOER WAR SITE

Yellow Route – 1.9km

Green Route – 5.6km

Total: 7.5km